

Quick Start Guide

NVR

DS-7600NI-SE/P Series NVR

NOTE: For more detailed information, refer to the User's Manual on the CD-ROM. You must use your PC or MAC to access the files.

Quick Start

NOTE: Connect VGA monitor and mouse before starting.

1. Overview
2. Connection
3. Startup/Shutdown
4. Formatting a Disk
5. Setting Date & Time
6. Recording
7. Playback
8. Backup
9. Network Connection
10. Adding IP Cameras (UPNP available)

NOTE: For more detailed information, refer to the User's Manual on the CD-ROM. You must use your PC or MAC to access the files.

Network Video Recorder

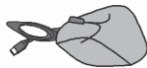
1. Overview

BEFORE STARTING: Connect VGA monitor and mouse (mouse supplied).

Check that your package includes the following:



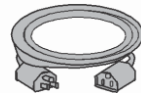
Hybrid/Analog DVR



Mouse



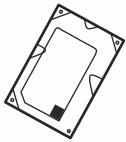
IR Remote



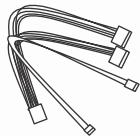
Power Cord



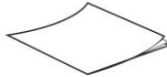
Screws



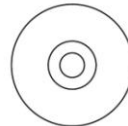
Hard Drive (PreInstalled)



HDD Cables



Quick Start Guide



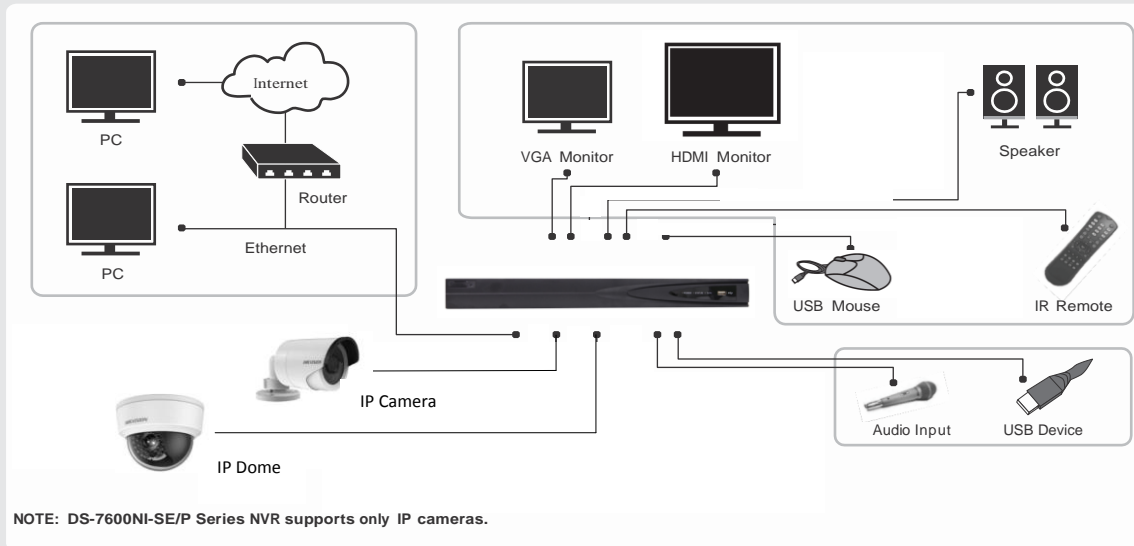
Manual/Software CD

Front Panel Description:



1. Status Indicators:
Power
Status
Tx/Rx
2. USB Port

2. Connection



3. Startup and Shutdown

To Startup Your NVR:


1. Plug power cord into NVR and electrical outlet. It is HIGHLY recommended to use a surge protector. The Power indicator LED on the front panel will turn yellow.
2. Connect a VGA or HDMI monitor and mouse into the NVR. NOTE: Monitor and mouse need to be plugged in before starting.
3. Switch the POWER button on the back rear panel. The Power indicator LED will turn yellow. The unit will begin to start.

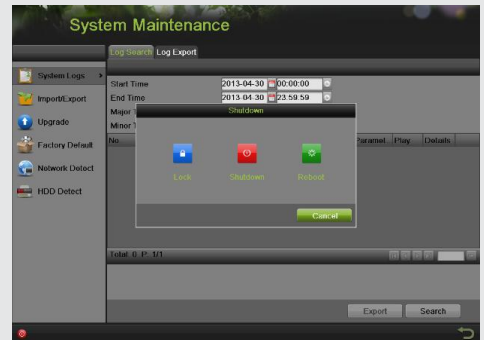
NOTE: Each HDD will start separately to conserve power

NOTE: Default password is 12345

3. Startup and Shutdown (cont.)

To Shut down Your DVR:

1. Enter the Shutdown menu by going to **Main Menu > Maintenance**.
2. Click  to access the Shutdown menu.
3. Select the Shutdown button.
4. Click the Yes button.



4. Formatting a Disk

A newly installed hard disk drive (HDD) must be formatted first before it can be used with your DVR.

NOTE: Formatting the disk will erase all data on it.




To format a new disk:

1. Enter the HDD Configuration menu by going to **Main Menu > System Configuration > HDD**.
2. Place a check next to the disk to format. A disk that has not been formatted will show Uninitialized as its status.
If the disk is newly installed, the status of the drive will show up as **Uninitialized**.

Network Video Recorder

4. Formatting a Disk (cont.)

3. Click the **Init** button.
4. A confirmation message will appear on the screen. Click the Yes button to continue formatting process.
5. The status column will show the Initialization progress. After the disk has been formatted, the status of the disk will change to **Normal**.
6. Click  to exit out of HDD Menu.



5. Setting Date & Time

To Setup Date and Time:

1. Enter the Time/Date menu by going to **Main Menu > System Configuration > General > Time/Date**.
2. Select the correct time zone. Enter the correct date and time.
3. Click the Apply button to save the settings.



6. Recording



To Setup Recording Schedule:

You can set the recording schedule through two ways:

OPTION1:

Right click to access the menu. Select Start Recording from the list, select either Continuous Record or Event Record. This will apply a 24/7 recording for all active channels.

OPTION2:

1. Enter the **Schedule Configuration** menu by going to **Main Menu > Recording Configuration > Schedule**.
2. Select a camera to configure from the camera drop-down list.
3. Check the **Enable Schedule** checkbox to enable the recording schedule. If the checkbox is unchecked, the recording schedule will be disabled.
4. Click blue Continuous or yellow Event icon below time table to select recording type. Time table will switch to editable mode, drag mouse over time table to configure recording schedule. Different recording types will be marked with corresponding color.
5. Step 4 scheduling adjustments made to the hour, if recording schedule requires adjustments to the minutes, move to Step 7.
6. Select Recording Type for each day of the week. **Recording type** includes **Continuous** for continuous recording or **Event** for recording when an event is triggered (i.e. from detected motion) for the selected time period.
7. Select the start and stop time for each day of the week. The start and stop time are listed using a 24 hr cycle (i.e. 18:00 is equivalent to 6:00pm)
8. Check the **Enable Audio Output** checkbox by going to **Main Menu > System Configuration > Live View > General** if you would like to enable audio recording along with the video. Audio can only be recorded if an amplified audio source is connected to the IP camera.
9. Select the **Apply** button to save the schedule settings and click  to return to the previous menu. Clicking  without clicking **Apply** will go out of the menu without saving settings.



NOTE: Event recordings are recordings that are triggered from motion detection and/or from an external alarm.

7. Playback

Playback from Search:

1. Enter the Playback menu by going to **Main Menu > Playback.**
2. Select the camera and date you want to search.
3. The search results will be shown on the timeline with blue bars designating recorded files.
4. Click a time on the timeline, and then click Play Forward below the video preview window.



Playback Multiple Channels:

1. Follow the steps mentioned above to playback the video.
2. Click the Full-Screen button to enter full-screen mode, and select additional channels by ticking the checkbox next to the camera to play back multiple channels.
3. Stop playback on any of channel by un-tick the corresponding checkbox.

NOTE: Up to 8 channels can be played back at the same time

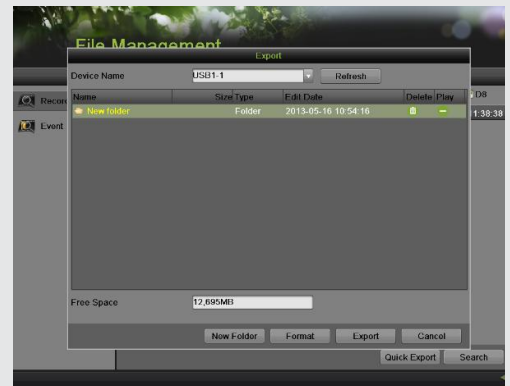
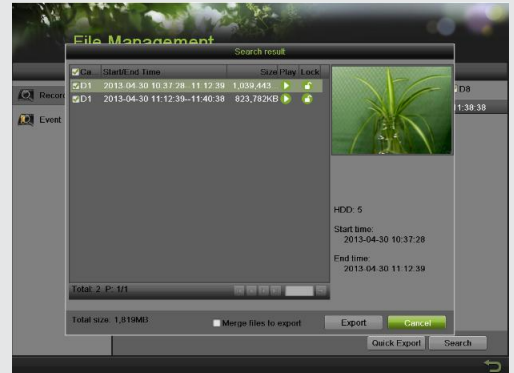


Network Video Recorder

8. Backup

Backup Recorded Files (Export):

1. Enter the File Management menu by going to **Main Menu > File Management**
2. Place a check next to the cameras you want to search files for backup. Select the recording type, date and time range you want to backup. Click on **Search**.
3. A search results window will display your results. You may click the Play button to verify that these files are indeed the ones you would like to backup. The total size of backup files will be displayed in lower left hand corner.
4. Click the **Export** button.
5. Select device to backup to from drop-down list (USB Flash Drive, USB HDD, DVD Writer). If backup device is not recognized:
 - Click the Refresh button.
 - Reconnect device.
 - Check for compatibility from vendor.
6. The total available free space will be shown. If the free space is not sufficient, delete files from the storage device or insert a device with more available free space.
7. Click the **Export** button to begin backup process. After the backup has completed, click the OK button.



9. Network Connection

Network Connection

Using Web Browsers

All Hikvision products use the default IP address of **192.0.0.64**

1. Connect a CAT5 or CAT6 cable from the NVR to a PC or Laptop computer.

Note your laptop or PC computers existing address, such as:

- IP: 192.0.0.62
- Subnet: 255.255.255.0

2. Open web browser.
3. In the address bar, type 192.0.0.64

If prompted, allow the installation of the Hikvision application.
It may be necessary to add this IP address as a Trusted Site with Low Security.

4. Login to the DVR:

- Username: admin
- Password: 12345

5. Go to the **Configuration** tab, and then unfold the **Remote Configuration** menu.
6. Click on **Network Settings**.
7. Enter the IP address you wish the NVR to have, then **SAVE**.
8. Reset your laptop or PC to its original IP address, subnet and gateway.
9. Type the new address in web browser.

Using Hikvision iVMS 4200 Software

If possible, check www.hikvisionusa.com/downloads.html for the latest version of the **iVMS4200** software.

If internet access is not available, install the software from the CD.
Then follow the instructions included with the software.

Network Video Recorder

10. Adding IP Cameras

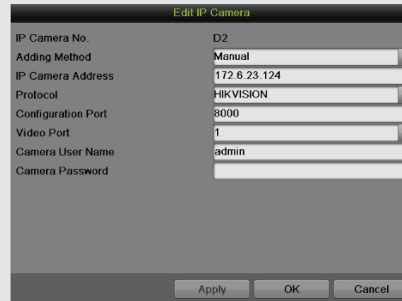
Adding IP Cameras

The DS-7600NI-SE/P series NVR provides PoE interfaces which can connect to IP cameras directly. The PoE interface supports Plug-and-Play function. You can also connect to the online IP camera manually.



Plug-and-Play:

1. Connect the IP cameras via PoE interfaces.
2. Enter the Cameras menu by going to **Main Menu > Cameras Setup > Cameras**. You can see the connected cameras with assigned IP address are listed.

Note: 1) For HIKVISION IP camera, to use Plug-and Play, user just need to plug the camera. 2) For third-party IP camera, please make sure it supports ONVIF protocol, SADP search of ONVIF. Also, user name and password should be admin/12345, IP address should be in the same segment of POE switch NIC IP address(192.168.254.1 is default IP address).



Manual:

1. Enter the **Cameras** menu by going to **Main Menu > Cameras Setup > Cameras**.
2. Click the **Search** button to automatically detect connected IP cameras on the network.
3. You can modify the camera's IP, subnet and port settings by clicking on the  next to the camera's IP address.
4. Click  on added camera list and change the **Adding Method** from Plug-and-Play to Manual.
5. Input the necessary information like IP address, password and so on for the camera that you want to connect. Click **Apply** to confirm adding the camera and click **OK** to return to the previous menu. Please note the camera's status will show as disconnected initially. Click the **Refresh** button to obtain a connected status. You can also click the play icon to verify a successful connection to the camera.
6. Go to **Main Menu > Recording Configuration > Parameters** to setup IP camera recording resolution, frame rate, etc.

HIK*VISION*

First Choice For Security Professionals

HIK*VISION*

908 Canada Court
City of Industry, CA 91748
U.S.A.

www.hikvisionusa.com